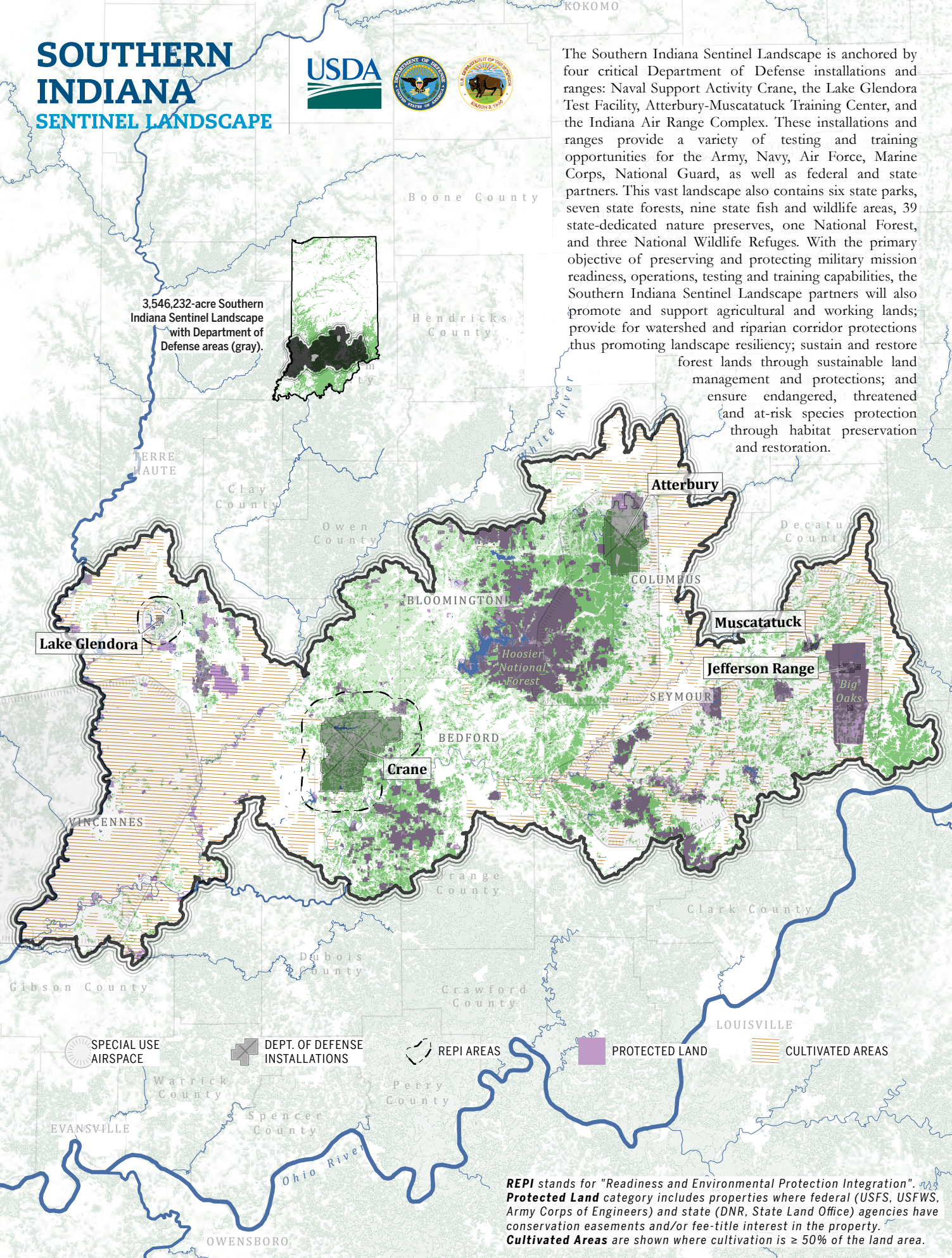
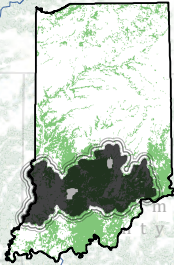


SOUTHERN INDIANA SENTINEL LANDSCAPE



The Southern Indiana Sentinel Landscape is anchored by four critical Department of Defense installations and ranges: Naval Support Activity Crane, the Lake Glendora Test Facility, Atterbury-Muscatatuck Training Center, and the Indiana Air Range Complex. These installations and ranges provide a variety of testing and training opportunities for the Army, Navy, Air Force, Marine Corps, National Guard, as well as federal and state partners. This vast landscape also contains six state parks, seven state forests, nine state fish and wildlife areas, 39 state-dedicated nature preserves, one National Forest, and three National Wildlife Refuges. With the primary objective of preserving and protecting military mission readiness, operations, testing and training capabilities, the Southern Indiana Sentinel Landscape partners will also promote and support agricultural and working lands; provide for watershed and riparian corridor protections thus promoting landscape resiliency; sustain and restore forest lands through sustainable land management and protections; and ensure endangered, threatened and at-risk species protection through habitat preservation and restoration.

3,546,232-acre Southern Indiana Sentinel Landscape with Department of Defense areas (gray).



Lake Glendora

Crane

Atterbury

Muscatatuck

Jefferson Range

Big Oaks

SPECIAL USE AIRSPACE

DEPT. OF DEFENSE INSTALLATIONS

REPI AREAS

PROTECTED LAND

CULTIVATED AREAS

REPI stands for "Readiness and Environmental Protection Integration". **Protected Land** category includes properties where federal (USFS, USFWS, Army Corps of Engineers) and state (DNR, State Land Office) agencies have conservation easements and/or fee-title interest in the property. **Cultivated Areas** are shown where cultivation is $\geq 50\%$ of the land area.